

Programmer Module

The Programmer Module allows modification to the settings of a VESDA LaserPLUS system. Using an intuitive menu system, commissioning and maintenance of the system is convenient and efficient. The programmer is the access tool to the individual parameters on the LaserPLUS Detectors and Displays while also facilitating the configuration and maintenance of many Detectors connected by VESDAnet™.

Features

- Intuitive Menu System
- Backlit LCD Screen
- Multiple Language Supported
- 8 Large Tactile Buttons
- Password Security
- Choice of Mounting

Used for

- System Configuration
- Zone Configuration (eg: Thresholds)
- Zone Control (eg: Reset)
- System Status
- Device Status
- Event Log Interrogation
- Diagnostics & Commissioning

The Programmer can be mounted in the Detector unit, in a remote mounting box or in a 19" rack. A portable Hand-Held unit is also available. All versions can be used to program a number of Detectors simultaneously or individually.

Programming Overview

The menu driven interface makes programming of the VESDA LaserPLUS system very convenient.

The two rows of push-buttons enable you to navigate through the programming menu tree and change the settings for each device to suit specific requirements. The top row of push-buttons are "soft keys". With each changing screen their function is displayed on the bottom line of the LCD screen.

Simply select the Detector or device you wish to access, navigate to the parameter requiring change, and set the new value. All devices on the VESDAnet™ are

accessible and easily identified using the alphanumeric names assigned during system commissioning.

Three levels of password protection prevent general access to the devices on the VESDAnet™.

The first level allows access to the monitoring functions, allowing trusted personnel to check and reset the system.

The second level allows site administrators access to the control parameters.

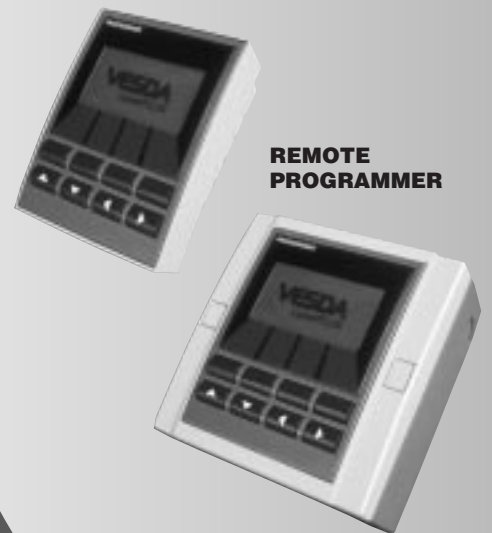
At the third level, a VESDA distributor can configure more advanced parameters. Also, lost passwords can be overcome, by obtaining a "once only" password from your local Vision Systems office.

The programmer provides comprehensive access to all the features of the VESDA LaserPLUS Detector:

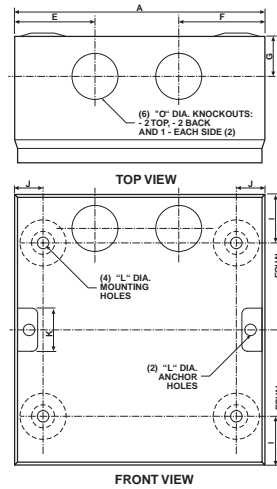
- Fast access to system or device status
- Textual description of active alarms and faults
- Complete access to the event log
- Access to all the configuration parameters: alarm thresholds, pipes in use, relay configurations
- Simultaneous setting of several Detectors: time and date, air flow thresholds, reference Detector
- Confirmation of filter replacement

**HAND-HELD
PROGRAMMER**

**REMOTE
PROGRAMMER**



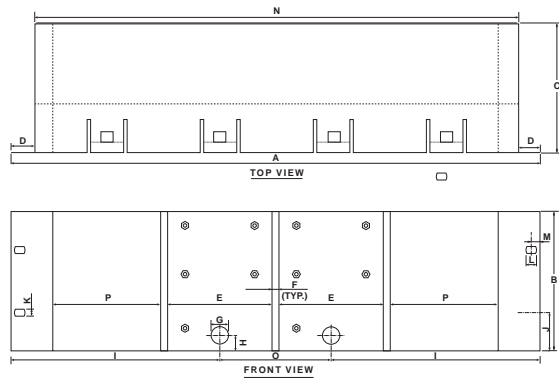
Programming Module Specifications



Remote Mounting Box

Dimensions		
	in	mm
A	5.5	140
B	5.9	150
C	2.75	70
D	2.36	60
E	1.75	44.5
F	1.9	48
G	.98	23
H	.98	25
I	1.1	27.5
J	.65	16.5
K	.98	25
L	.25	6.4
M	.06	1.6
N	.91	23
O	1.0	26

19" Sub Rack



Dimensions		
	in	mm
A	19	482
B	5	128
C	4.75	120
D	.82	21
E	3.82	97.2
F	.25	6.4
G	.62	16
H	.56	14
I	7.50	190
J	1.4	36
K	.28	7
L	.39	10
M	.31	8
N	17.37	440
O	4	102
P	4	98.5

Programmer - Hand-Held

Power Consumption:

1.3 watts quiescent plus 1.7 watts with backlight

Current Consumption:

50mA quiescent plus 60mA with backlight on (@ 24VDC)

Dimensions (WHD):

4.1" x 5.3" x 2.4"
(105mm x 135mm x 60mm)

Connections:

15 pin D-type to VESDA^{net} plug to VESDA^{net} socket in a detector or Remote Box

Programmer - Module

Power Consumption:

0.6 watts quiescent plus 1.7 watts with backlight

Current Consumption:

20mA quiescent plus 60mA with backlight on (@ 24VDC)

Dimensions (WHD):

3.9" x 5.1" x 1.2"
(98mm x 130mm x 30mm)

Connection:

Term connector to termination card or to expansion connector on another VESDA^{net} device.

Programmer - Remote

Power Consumption:

1.3 watts quiescent plus 1.7 watts with backlight

Current Consumption:

50mA quiescent plus 60mA with backlight on (@ 24VDC)

Dimensions (WHD):

5.5" x 5.9" x 3.5"
(140mm x 150mm x 90mm)

Connection

RS485 VESDA^{net} field wiring
Screw terminal blocks
(30-12 AWG, 0.2-2.5mm²)

Display Size:

2.75" x 1.45" (70mm x 37mm)
Full Graphical display
Large characters
8 lines, 21 characters per line
Software switchable backlit screen with contrast control.

Inactivity Time out:

10 minutes (Defaults to log on screen)

Push-Button Size:

2 Rows of 4 push-buttons each .75" x .50"
(19mm x 12mm)

Controlled Access:

User ID (3 characters) and PIN (4 digits)

Number of Users:

Up to 14 Users or Administrators
1 Distributor Level

Three (3) Default ID's:

USR = User (Operator level)
ADM = Administrator (Alter most functions)
DST = VESDA Distributor

Operating Temperature:

32° to 102°F (0° to 39°C)
Humidity: 10-95%RH, noncondensing

Access to Detector Parameter:

Status (& software version)
Descriptive Alarms & Faults
Smoke & Flow readings

Access to Display Parameters

Status & software
Display mode
Push-Button lockout
Zone number
Display name (21 characters)

4 Alarm Thresholds:

Alert, Action, Fire 1 & Fire 2

Sensitivity:	Min.	Max.
Fire 2	6.0%/ft*	.006%/ft
Fire 1	.610%/ft	.004%/ft
Action	.608%/ft	.003%/ft
Alert	.606%/ft	.0015%/ft

Alarms delays (0-60 seconds)
Day/Night/Weekend/Holiday Options
Event Log (up to 18,000 events)
Zone number and name (21 characters)
Remote reset & isolate
Pipes in use (pipe 1 to 4)
Aspirator Speed & Flow control
Confirmation of filter change
Relay configuration (7 relays)
Reference detector

Maximum Modules Addressable:

255 detectors, displays, High Level Interface and relay modules

Ordering Information:

68-002 Handheld Programmer
68-030 Remote programmer

* For UL, minimum sensitivity is 4%/ft.



Fike Protection Systems

704 S. 10th Street
Blue Springs, Missouri USA 64015
Ph: 816-229-3405
Fax: 816-229-4615
Http://www.fike.com

PRINTED IN U.S.A.